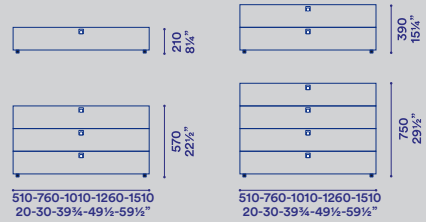




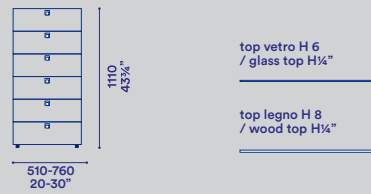
comodini P 460 / night stand D 18"



contenitori P 510 / drawer unit D 20"



contenitori P 46 / drawer unit D 18"



top vetro H 6
/ glass top H 1/4"

top legno H 8
/ wood top H 1/4"

Gruppo notte laccato opaco, lucido o metallo, con maniglia incassata finitura Piombo. Top disponibile laccato opaco, lucido, metallo, vetro liscio/satinato o Marglas liscio/satinato. Piede H 30.

Night group matt, glossy or metal lacquered, with built-in Lead finish handle. Top available matt, glossy or metal lacquered, plain or satinated glass, plain or satinated Marglas. Feet H 30-1 1/4".

Finiture / Finishes

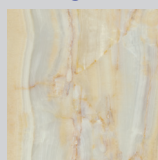
Laccati opachi e lucidi / Matt and gloss lacquers



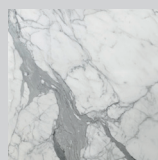
Laccato metallo / Metal Lacquers



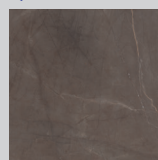
Marglas liscio o satinato / *Plain or satinated Marglas*



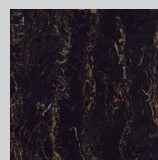
onice



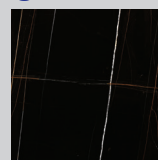
calacatta



gaudi stone

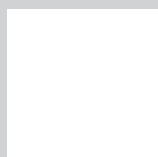


portoro

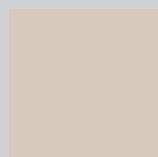


sahara noir

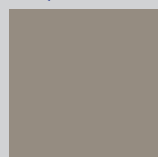
Vetri lisci o satinati laccati / *Plain or satinated Glass*



bianco



tortora



corda



ostrica



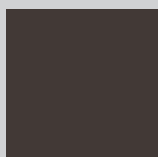
cenere



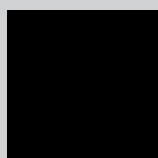
ardesia



visone



terra



nero

La corrispondenza dei colori con i prodotti commercializzati, può risultare alterata dalla stampa cartacea. I colori, pertanto, non vanno considerati al fine dell'acquisto ma a scopo puramente indicativo. Le finiture sono valide per la collezione Jesse ad eccezione degli elementi dove diversamente indicato.

The real colours used on our products may differ from those reproduced on paper. The colours shown are merely indicative and must not be considered as binding for purchase. These finishes are valid for the Jesse Collection unless otherwise indicated for single elements.